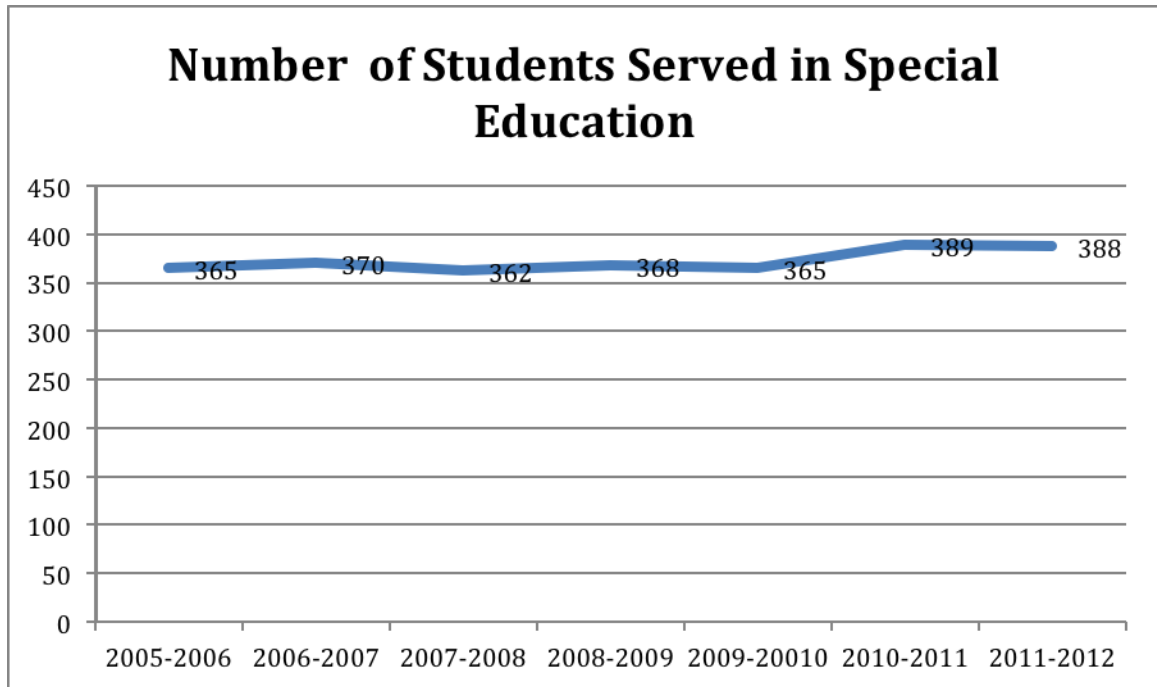


Special Education Information Sheet (2011-2012 School Year)  
 Compiled By: Jason Volmer, Coordinator of Special Education  
 November 2011

**Number of Students Served (based on headcount)**

Year	2005-2006	2006-2007	2007-2008	2008-2009	2009-2010	2010-2011	2011-2012
<b>Total</b>	365	370	362	368	365	389	388



**Number of Tuition-In Students (non-resident students served)**

YEAR	10-11	11-12
ADM	0	2
Ankeny	0	1
Eddyville-Blakesburg	1	1
Dallas Center-Grimes	0	2
Des Moines Independent	31	27
Johnston	12	15
Saydel Community	1	0
Waukee	7	5
West Des Moines	13	22
Court Placed	1	1
<b>Total</b>	<b><u>66</u></b>	<b><u>76</u></b>

**Number Tuition-Out Students (Resident students served elsewhere)**

<b>Year</b>	<b>10-11</b>	<b>11-12</b>
Dallas Center-Grimes	2	1
Des Moines Independent	5	2
Eldora-New Providence	0	3
Johnston	6	8
North Polk	1	0
Norwalk	1	0
South Tama	2	0
Waverly-Shell Rock	1	1
West Des Moines	2	4
Woodward-Granger	2	4
Out of State Placements	0	2
<b>Total</b>	<b><u>22</u></b>	<b><u>25</u></b>

<b>Percent of Students Open Enrolled</b>	
<b>General Education</b>	<b>15.5%</b>
<b>Special Education Students Open Enrolled</b>	<b>19.0%</b>

**Number/Percent of IEP Students by Grade Range**

<b>Pre-K</b>	18/5%
<b>K-5</b>	132/34%
<b>6-8</b>	113/29%
<b>9-12</b>	124/32%

**Number of Special Education Teachers**

<b>Level</b>	<b>10-11</b>	<b>11-12</b>
<b>Preschool</b>	5	7
<b>Elementary</b>	12 (11.5 FTE)	11+1*
<b>Middle school</b>	9	10
<b>High School</b>	11	11
<b>One on One program</b>	1	2-1*

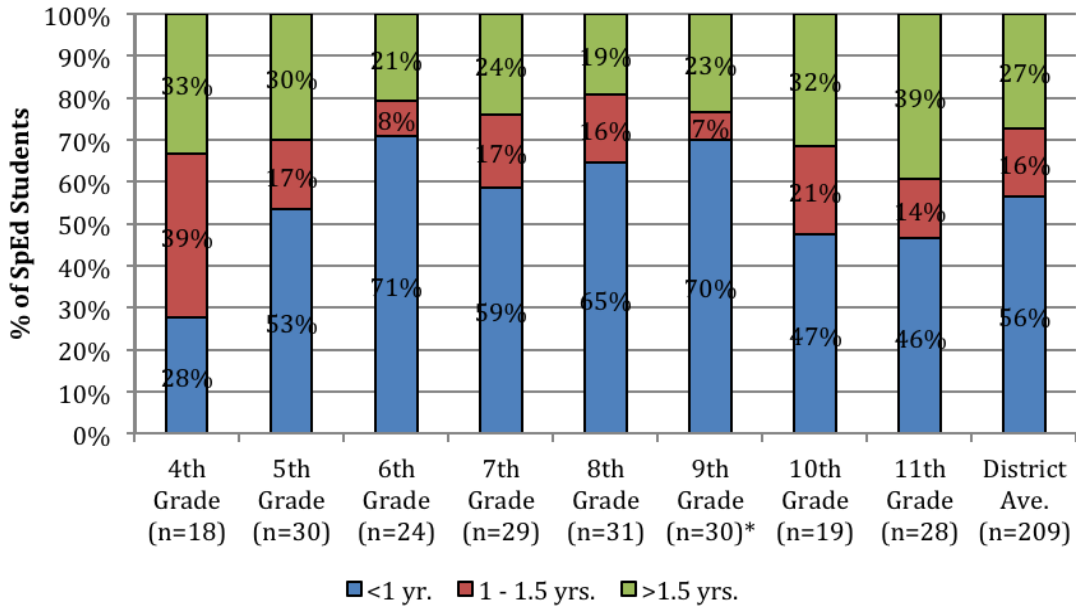
<b>Preschool</b>	4:1	2.6:1
<b>Elementary</b>	11:1	11:1
<b>Middle school</b>	13:1	11.3:1
<b>High School</b>	10:1	11.3:1

<b>Reading Comprehension Average Growth in National Grade Equivalent</b>		
	<b>2008-09 to 2009-10 School Years</b>	<b>2009-10 to 2010-11 School Years</b>
<b>3rd to 4th</b>	0.93	1.41
<b>4th to 5th</b>	0.08	1.03
<b>5th to 6th</b>	0.69	0.38
<b>6th to 7th</b>	1.64	0.76
<b>7th to 8th</b>	2.03	0.24
<b>8th to 9th</b>	0.32	-0.20
<b>9th to 10th</b>	0.38	0.94
<b>10th to 11th</b>	1.45	0.61
<b>District Ave.</b>	0.97	0.59

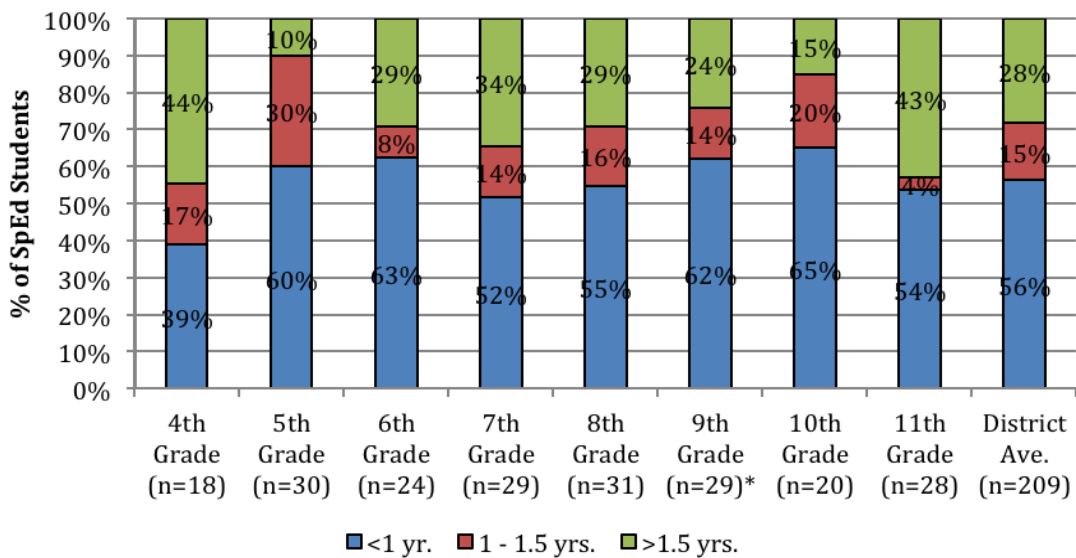
<b>Total Math Average Growth in National Grade Equivalent</b>		
	<b>2008-09 to 2009-10 School Years</b>	<b>2009-10 to 2010-11 School Years</b>
<b>3rd to 4th</b>	0.81	1.61
<b>4th to 5th</b>	0.46	0.53
<b>5th to 6th</b>	0.84	1.10
<b>6th to 7th</b>	1.31	1.00
<b>7th to 8th</b>	0.99	0.81
<b>8th to 9th</b>	1.09	-0.36
<b>9th to 10th</b>	0.54	-0.36
<b>10th to 11th</b>	0.80	0.85
<b>District Ave.</b>	0.87	0.63

<b>Science Average Growth in National Grade Equivalent</b>		
	<b>2008-09 to 2009-10 School Years</b>	<b>2009-10 to 2010-11 School Years</b>
<b>3rd to 4th</b>	1.17	1.66
<b>4th to 5th</b>	1.40	1.06
<b>5th to 6th</b>	1.18	0.30
<b>6th to 7th</b>	1.17	0.28
<b>7th to 8th</b>	1.09	0.18
<b>8th to 9th</b>	0.74	-0.20
<b>9th to 10th</b>	0.75	-0.14
<b>10th to 11th</b>	0.36	1.18
<b>District Ave.</b>	0.95	0.51

## 2011 Reading Comprehension Growth



## 2011 Math Total/Concepts & Problems Growth



## 2011 Science Growth

